

HEAD OR FOOT BOLT

10105 HEAD OR FOOT BOLT

10105 HEAD OR FOOT BOLT

APPLICATION:

For the inactive leaf of pairs of swinging hollow metal, grating or steel plate doors.

FUNCTION:

Actuated by means of a "spanner" type key which extends the bolt into appropriate receptacle in the floor or jamb head. A special foot bolt receptacle is available for floor installations.

TECHNICAL DATA:

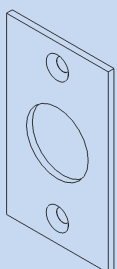
- STANDARD FINISH: Galvanized
- COVER: Cold-rolled steel plate
- CASE: Ductile iron
- LOCK BOLT: Cold-rolled steel
- SPANNER KEY: Cold-rolled steel
- SIZE: 5-3/8" H x 2-3/4" W x 1-7/8" TK
- WEIGHT: 5.5 lbs.
- BOLT SIZE: 1" Diameter
- BOLT THROW: 3/4"

10105R FLOOR RECEPTACLE

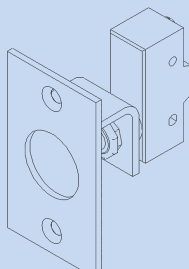
- SIZE: 3" H x 1-5/8" DIA x 1-5/8" sq. Base
- WEIGHT: 2.25 lbs.

OPTIONS:

- Head bolt keeper
Specify: "10105B" x USP
- Head bolt keeper switch
Specify: "10105CL" x USP
- Foot bolt receptacle Specify: 10105R



10105B



10105CL



Note: Shown with cover plates used only with grating and plate doors

10105R FOOT BOLT RECEPTACLE

10105K KEY

