

PARACENTRIC CYLINDER AND KEY

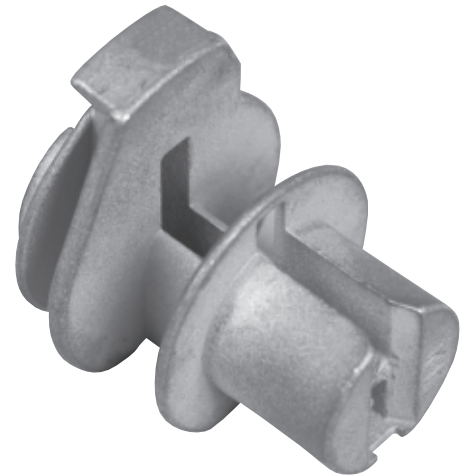
APPLICATION:

A complete line of Southern Steel brand, high-quality detention-type locks is available with lever tumbler cylinders. The cylinders are cast bronze and are operated by paracentric key. Master keying is not available for locks with paracentric cylinders.

TECHNICAL DATA:

- CYLINDERS and KEYS
Silicon bronze/copper alloy
- CYLINDER SIZE:
1" Diameter (Nominal)
- CYLINDER WEIGHT: .5 lb.
- KEY SIZE:
4-3/4" L x 5/32" TK
- KEY WEIGHT: .2 lb.
- TENSILE STRENGTH:
60,000 p.s.i.
- YIELD STRENGTH:
20,000 p.s.i.
- ROCKWELL HARDNESS:
73 Minimum HRB

PARACENTRIC CYLINDER



PARACENTRIC KEY

